

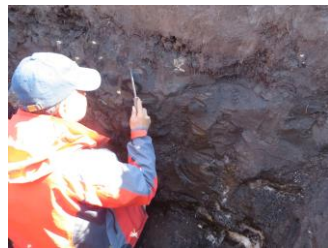
June 28-July15, 2015

Franklin Bluffs field campaign

This summer's field campaign was very exciting. The Dalton Highway had been closed due to damage by flooding from the Sag River in April and May [more info](#). The flooding was apparently caused by extensive summer rains followed by winter freezing that trapped water in place and then rapid spring melt that flooded extensive areas, damaged the highway and isolated the Deadhorse area. Nevertheless, by June the highway opened again and the Sag River was back to its bed. The lasting remains of the flooding could be seen in the huge blocks of ice and large amounts of gravel brought by the raging waters and deposited along the sites of the highway. Fittingly, this year we sampled soils in the Franklin Bluffs area. The Franklin Bluffs area contains alluvial terraces formed by the Sag River (picture 5). We located and sampled high, low and flat-center polygons. We were not surprised to find large amounts of gravel in most of 13 pits we opened and sampled (picture 1). We also found extensive organic material (picture 2) and marl layers at depth (picture 3). The formation of marl layers could be seen in modern times in the nearby lagoons (picture 4). The deepest sampled was obtained at a high-center polygon at 316 cm.



Picture 1



Picture 2



Picture 3



Picture 4



Picture 5